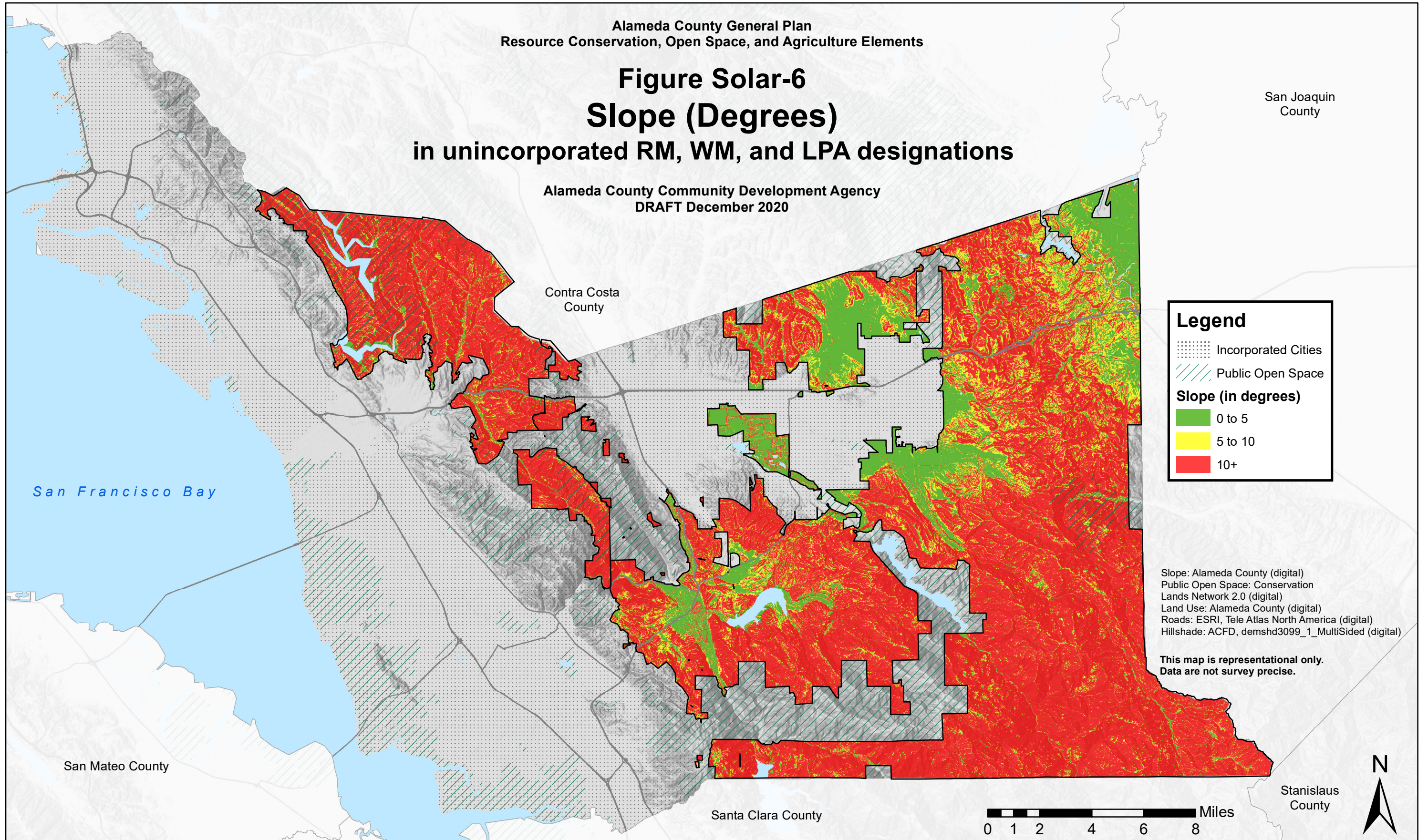


Figure Solar-6 Slope (Degrees) in unincorporated RM, WM, and LPA designations

Alameda County Community Development Agency
DRAFT December 2020



Legend

- Incorporated Cities
- Public Open Space

Slope (in degrees)

- 0 to 5
- 5 to 10
- 10+

Slope: Alameda County (digital)
Public Open Space: Conservation Lands Network 2.0 (digital)
Land Use: Alameda County (digital)
Roads: ESRI, Tele Atlas North America (digital)
Hillshade: ACFD, demshd3099_1_MultiSided (digital)

**This map is representational only.
Data are not survey precise.**

0 1 2 4 6 8 Miles

