

**A
P
P
E
N
D
I
X

E**

APPENDIX E

ENVIRONMENTAL DATA RESOURCES, INC.

Aerial Photo Decade Package



20957 Baker Road, Castro Valley

20957 Baker Road

Castro Valley, CA 94546

Inquiry Number: 4697696.9

August 11, 2016

The EDR Aerial Photo Decade Package



6 Armstrong Road, 4th floor
Shelton, CT 06484
Toll Free: 800.352.0050
www.edrnet.com

Site Name:

20957 Baker Road, Castro Vall
 20957 Baker Road
 Castro Valley, CA 94546
 EDR Inquiry # 4697696.9

Client Name:

Engeo Inc.
 2010 Crow Canyon Place
 San Ramon, CA 94583
 Contact: Lauren Gordon



Environmental Data Resources, Inc. (EDR) Aerial Photo Decade Package is a screening tool designed to assist environmental professionals in evaluating potential liability on a target property resulting from past activities. EDR's professional researchers provide digitally reproduced historical aerial photographs, and when available, provide one photo per decade.

Search Results:

<u>Year</u>	<u>Scale</u>	<u>Details</u>	<u>Source</u>
2012	1"=500'	Flight Year: 2012	USDA/NAIP
2010	1"=500'	Flight Year: 2010	USDA/NAIP
2009	1"=500'	Flight Year: 2009	USDA/NAIP
2006	1"=500'	Flight Year: 2006	USDA/NAIP
2005	1"=500'	Flight Year: 2005	USDA/NAIP
1998	1"=500'	Flight Date: August 27, 1998	USDA
1993	1"=500'	Acquisition Date: July 10, 1993	USGS/DOQQ
1982	1"=500'	Flight Date: July 05, 1982	USDA
1974	1"=500'	Flight Date: October 14, 1974	USGS
1968	1"=500'	Flight Date: April 22, 1968	USGS
1958	1"=500'	Flight Date: July 21, 1958	USGS
1946	1"=500'	Flight Date: July 29, 1946	USGS
1939	1"=500'	Flight Date: July 26, 1939	USDA

When delivered electronically by EDR, the aerial photo images included with this report are for ONE TIME USE ONLY. Further reproduction of these aerial photo images is prohibited without permission from EDR. For more information contact your EDR Account Executive.

Disclaimer - Copyright and Trademark Notice

This Report contains certain information obtained from a variety of public and other sources reasonably available to Environmental Data Resources, Inc. It cannot be concluded from this Report that coverage information for the target and surrounding properties does not exist from other sources. NO WARRANTY EXPRESSED OR IMPLIED, IS MADE WHATSOEVER IN CONNECTION WITH THIS REPORT. ENVIRONMENTAL DATA RESOURCES, INC. SPECIFICALLY DISCLAIMS THE MAKING OF ANY SUCH WARRANTIES, INCLUDING WITHOUT LIMITATION, MERCHANTABILITY OR FITNESS FOR A PARTICULAR USE OR PURPOSE. ALL RISK IS ASSUMED BY THE USER. IN NO EVENT SHALL ENVIRONMENTAL DATA RESOURCES, INC. BE LIABLE TO ANYONE, WHETHER ARISING OUT OF ERRORS OR OMISSIONS, NEGLIGENCE, ACCIDENT OR ANY OTHER CAUSE, FOR ANY LOSS OF DAMAGE, INCLUDING, WITHOUT LIMITATION, SPECIAL, INCIDENTAL, CONSEQUENTIAL, OR EXEMPLARY DAMAGES. ANY LIABILITY ON THE PART OF ENVIRONMENTAL DATA RESOURCES, INC. IS STRICTLY LIMITED TO A REFUND OF THE AMOUNT PAID FOR THIS REPORT. Purchaser accepts this Report "AS IS". Any analyses, estimates, ratings, environmental risk levels or risk codes provided in this Report are provided for illustrative purposes only, and are not intended to provide, nor should they be interpreted as providing any facts regarding, or prediction or forecast of, any environmental risk for any property. Only a Phase I Environmental Site Assessment performed by an environmental professional can provide information regarding the environmental risk for any property. Additionally, the information provided in this Report is not to be construed as legal advice.

Copyright 2016 by Environmental Data Resources, Inc. All rights reserved. Reproduction in any media or format, in whole or in part, of any report or map of Environmental Data Resources, Inc., or its affiliates, is prohibited without prior written permission.

EDR and its logos (including Sanborn and Sanborn Map) are trademarks of Environmental Data Resources, Inc. or its affiliates. All other trademarks used herein are the property of their respective owners.

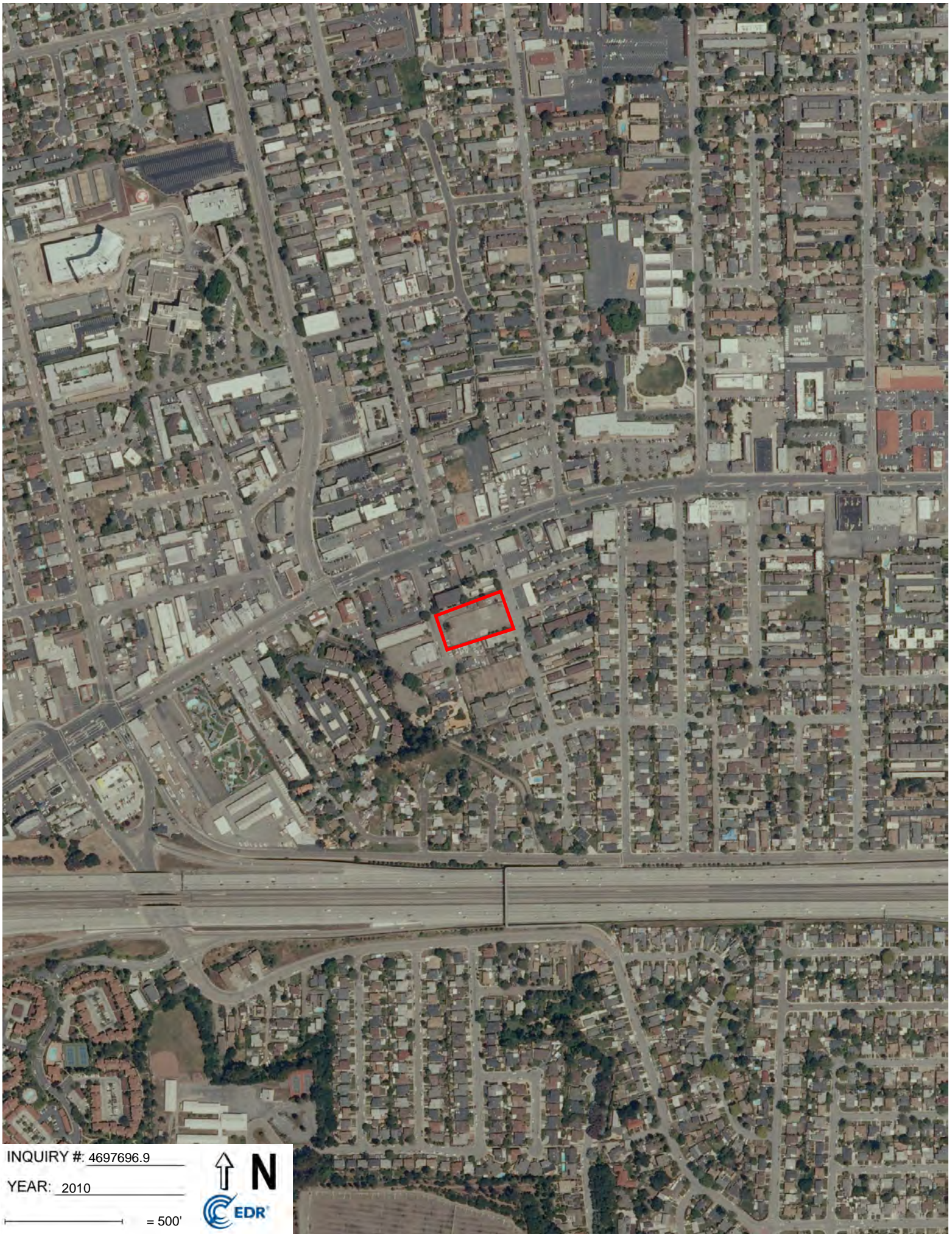


INQUIRY #: 4697696.9

YEAR: 2012

— = 500'





INQUIRY #: 4697696.9

YEAR: 2010

— = 500'



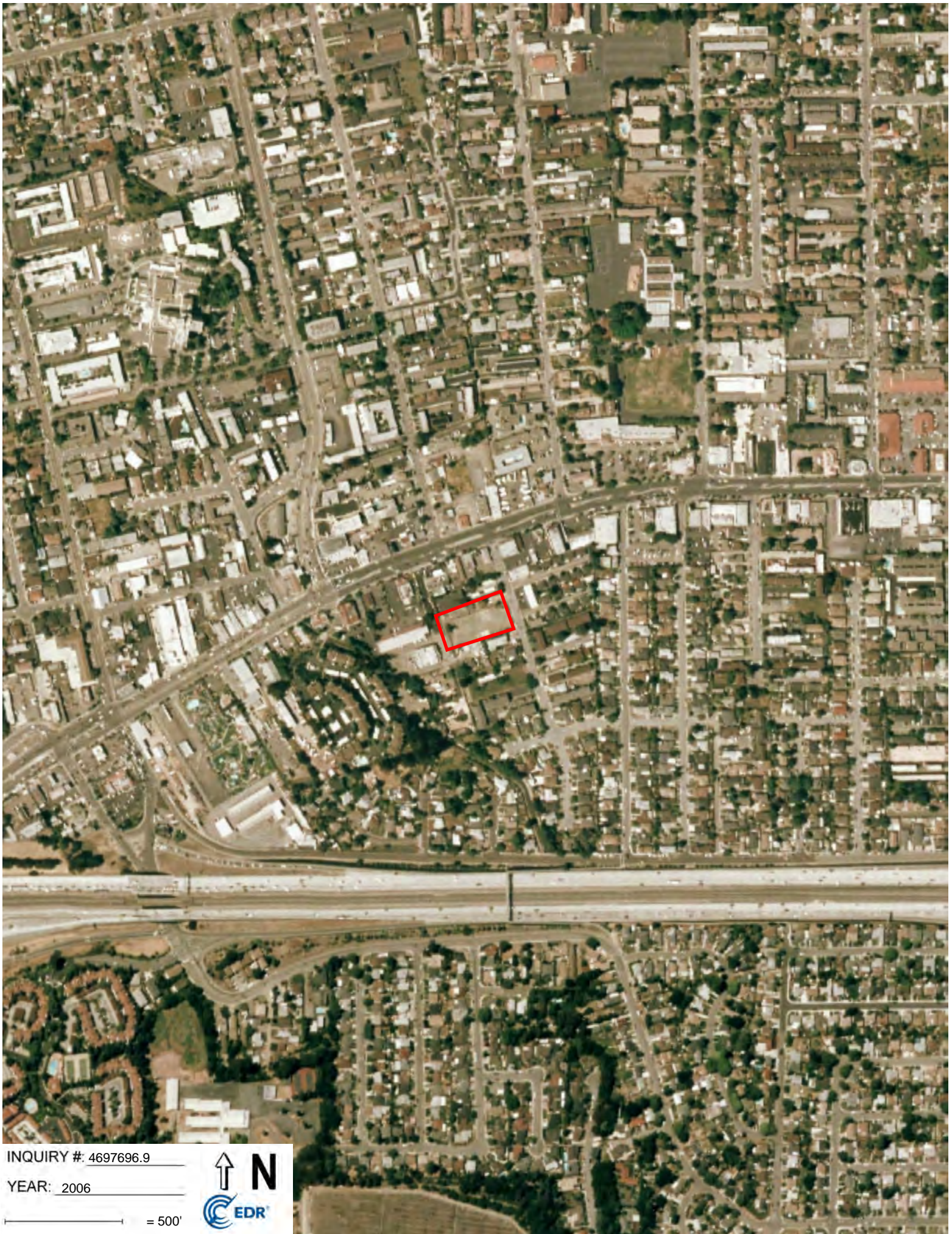


INQUIRY #: 4697696.9

YEAR: 2009

— = 500'





INQUIRY #: 4697696.9

YEAR: 2006

— = 500'





INQUIRY #: 4697696.9

YEAR: 2005

— = 500'





INQUIRY #: 4697696.9

YEAR: 1998

— = 500'





INQUIRY #: 4697696.9

YEAR: 1993

— = 500'





INQUIRY #: 4697696.9

YEAR: 1982

— = 500'





INQUIRY #: 4697696.9

YEAR: 1974

— = 500'





INQUIRY #: 4697696.9

YEAR: 1968

— = 500'





INQUIRY #: 4697696.9

YEAR: 1958

— = 500'





INQUIRY #: 4697696.9

YEAR: 1946

— = 500'





INQUIRY #: 4697696.9

YEAR: 1939

— = 500'

